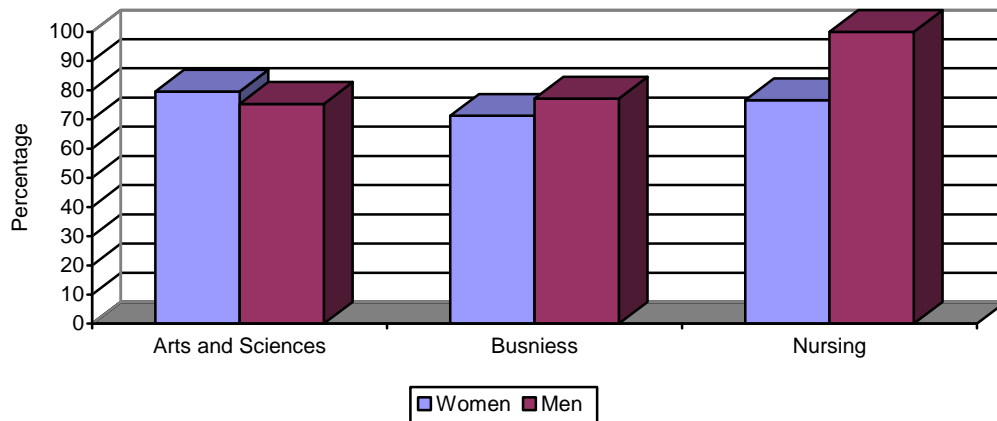


SECTION 4: UNIVERSITY DATA: ATTRITION AND GRADUATION RATES

Table 4.5: 2005 Freshman Graduation Rates by Ethnicity, School and Sex

	Freshmen	No./Percent Graduating in 4 years		No./Percent Graduating in 5 years		No./Percent Graduating in 6 years	
Black, Non-Hispanic	35	18	51.4%	22	62.9%	23	65.7%
American Indian/Alaskan Native	14	5	35.7%	8	57.1%	8	57.1%
Asian/Pacific Islander	91	66	72.5%	78	85.7%	78	85.7%
Hispanic	38	16	42.1%	22	57.9%	24	63.2%
International	3	2	66.7%	2	66.7%	2	66.7%
White, Non-Hispanic	789	532	67.4%	607	76.9%	615	77.9%
Combined Total	970*	639	65.9%	739	77.2%	750	77.3%
Arts and Sciences							
Women	439	304	69.2%	347	79.0%	349	79.5%
Men	308	192	62.3%	226	73.4%	232	75.3%
Total Arts and Sciences	747	496	66.4%	573	76.7%	581	77.8%
Business Administration							
Women	59	37	62.7%	41	69.5%	42	71.2%
Men	96	63	65.6%	74	77.1%	74	77.1%
Total Business Administration	155	100	64.5%	115	74.2%	116	74.8%
Nursing							
Women	64	42	65.6%	48	75.0%	49	76.6%
Men	4	1	25.0%	3	75.0%	4	100.0%
Total Nursing	68	43	63.2%	51	75.0%	53	77.9%
Combined Women	562	383	68.1%	436	77.6%	440	78.3%
Combined Men	408	256	62.7%	303	74.3%	310	76.0%
Total	970	639	65.9%	739	76.2%	750	77.3%
Financial Aid Status							
Pell Grant Recipients	174	103	59.2%	125	71.8%	126	72.4%
Perkins, Federal Nursing, Subsidized Stafford (No Pell)	259	156	60.2%	180	69.5%	183	70.7%
No Pell, Perkins, Federal Nursing or Subsidized Stafford	537	380	70.8%	434	80.8%	440	81.9%

2005 Freshman Graduation Rates



*Two students were removed from the original cohort due to Military Service and Mission work.